

LES JAUNES



Beige vert (RAL 1000)



Beige (RAL 1001)



Jaune sable (RAL 1002)



Jaune de sécurité (RAL 1003)



Jaune or (RAL 1004)



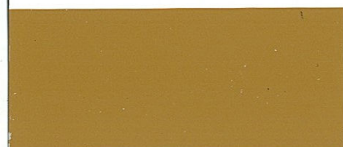
Jaune miel (RAL 1005)



Jaune maïs (RAL 1006)



Jaune narcisse (RAL 1007)



Beige brun (RAL 1011)



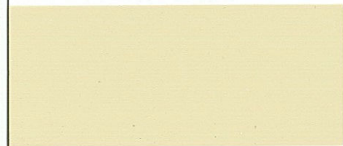
Jaune citron (RAL 1012)



Blanc perlé (RAL 1013)



Ivoire (RAL 1014)



Ivoire clair (RAL 1015)



Jaune soufre (RAL 1016)



Jaune safran (RAL 1017)



Jaune zinc (RAL 1018)



Beige gris (RAL 1019)



Jaune olive (RAL 1020)



Jaune colza (RAL 1021)



Jaune signalisation (RAL 1023)



Jaune ocre (RAL 1024)



Jaune curry (RAL 1027)



Jaune melon (RAL 1028)



Jaune genêt (RAL 1032)



Jaune dahlia (RAL 1033)



Jaune pastel (RAL 1034)



Jaune soleil (RAL 1037)

LES ORANGES



Orangé jaune (RAL 2000)



Orangé rouge (RAL 2001)



Orangé sang (RAL 2002)



Orangé pastel (RAL 2003)



Orangé pur (RAL 2004)



Orangé rouge clair (RAL 2008)



Orangé signalisation (RAL 2009)



Orangé de sécurité (RAL 2010)



Orangé foncé (RAL 2011)



Orangé saumon (RAL 2012)

LES ROUGES



Rouge feu (RAL 3000)



Rouge de sécurité (RAL 3001)



Rouge carmin (RAL 3002)



Rouge rubis (RAL 3003)



Rouge pourpre (RAL 3004)



Rouge vin (RAL 3005)



Rouge noir (RAL 3007)



Rouge oxyde (RAL 3009)



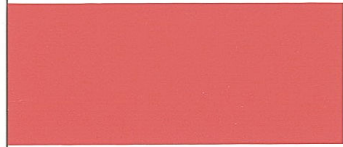
Rouge brun (RAL 3011)



Rouge beige (RAL 3012)



Rouge tomate (RAL 3013)



Vieux rose (RAL 3014)



Rose clair (RAL 3015)



Rouge corail (RAL 3016)



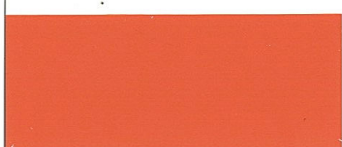
Rosé (RAL 3017)



Rouge fraise (RAL 3018)



Rouge signalisation (RAL 3020)



Rouge saumon (RAL 3022)



Rouge framboise (RAL 3027)



Rouge oriental (RAL 3031)

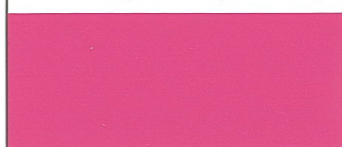
LES VIOLETS



Lilas rouge (RAL 4001)



Violet rouge (RAL 4002)



Violet bruyère (RAL 4003)



Violet bordeaux (RAL 4004)



Lilas bleu (RAL 4005)



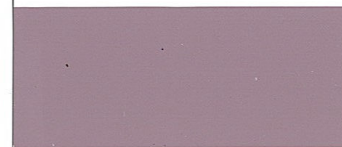
Pourpre signalisation (RAL 4006)



Violet pourpre (RAL 4007)



Violet de sécurité (RAL 4008)



Violet pastel (RAL 4009)



Télémagenta (RAL 4010)

LES BLEUS

LES VERTS

Bleu violet (RAL 5000)

Bleu vert (RAL 5001)

Bleu outremer (RAL 5002)

Bleu saphir (RAL 5003)

Bleu noir (RAL 5004)

Bleu de sécurité (RAL 5005)

Bleu brillant (RAL 5007)

Bleu gris (RAL 5008)

Bleu azur (RAL 5009)

Bleu gentiane (RAL 5010)

Bleu acier (RAL 5011)

Bleu clair (RAL 5012)

Bleu cobalt (RAL 5013)

Bleu pigeon (RAL 5014)

Bleu ciel (RAL 5015)

Bleu signalisation (RAL 5017)

Bleu turquoise (RAL 5018)

Bleu Capri (RAL 5019)

Bleu océan (RAL 5020)

Bleu d'eau (RAL 5021)

Bleu nocturne (RAL 5022)

Bleu distant (RAL 5023)

Bleu pastel (RAL 5024)

Vert patine (RAL 6000)

Vert émeraude (RAL 6001)

Vert feuillage (RAL 6002)

Vert olive (RAL 6003)

Vert bleu (RAL 6004)

Vert mousse (RAL 6005)

Olive gris (RAL 6006)

Vert bouteille (RAL 6007)

Vert brun (RAL 6008)

Vert sapin (RAL 6009)

Vert herbe (RAL 6010)

Vert réséda (RAL 6011)

Vert noir (RAL 6012)

Vert jonc (RAL 6013)

Olive jaune (RAL 6014)

Olive noir (RAL 6015)

Vert turquoise (RAL 6016)

Vert mai (RAL 6017)

Vert jaune (RAL 6018)

Vert blanc (RAL 6019)

Vert oxyde chromique (RAL 6020)

Vert pâle (RAL 6021)

Olive brun (RAL 6022)

Vert signalisation (RAL 6024)

Vert fougère (RAL 6025)

Vert opale (RAL 6026)

Vert clair (RAL 6027)

Vert pin (RAL 6028)

Vert menthe (RAL 6029)

Vert de sécurité (RAL 6032)

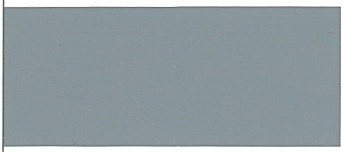
Turquoise menthe (RAL 6033)

Turquoise pastel (RAL 6034)

LES GRIS



Gris petit-gris (RAL 7000)



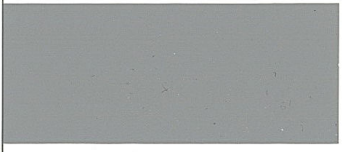
Gris argent (RAL 7001)



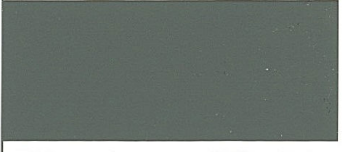
Gris olive (RAL 7002)



Gris mousse (RAL 7003)



Gris de sécurité (RAL 7004)



Gris souris (RAL 7005)



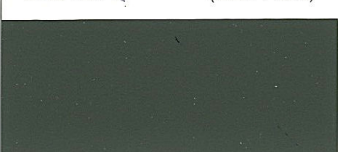
Gris beige (RAL 7006)



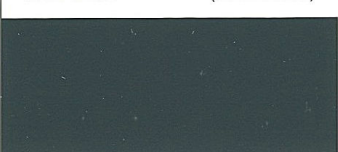
Gris kaki (RAL 7008)



Gris vert (RAL 7009)



Gris tente (RAL 7010)



Gris fer (RAL 7011)



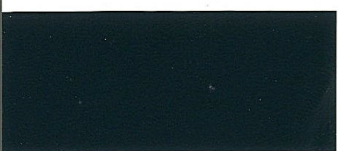
Gris basalte (RAL 7012)



Gris brun (RAL 7013)



Gris ardoise (RAL 7015)



Gris anthracite (RAL 7016)



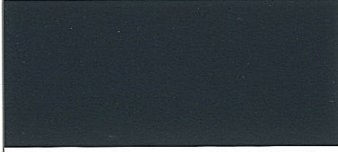
Gris noir (RAL 7021)



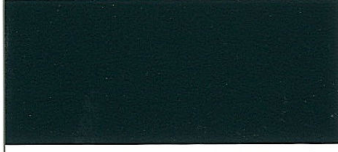
Gris terre d'ombre (RAL 7022)



Gris béton (RAL 7023)



Gris graphite (RAL 7024)



Gris granit (RAL 7026)



Gris pierre (RAL 7030)



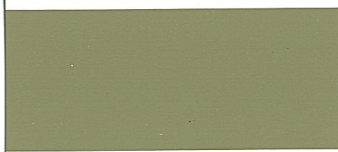
Gris bleu (RAL 7031)



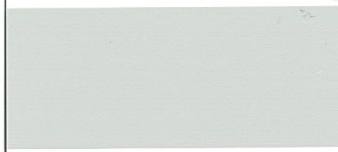
Gris silex (RAL 7032)



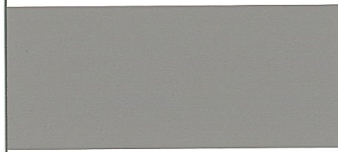
Gris ciment (RAL 7033)



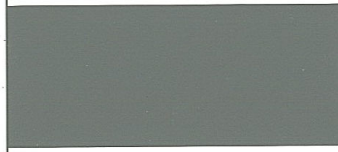
Gris jaune (RAL 7034)



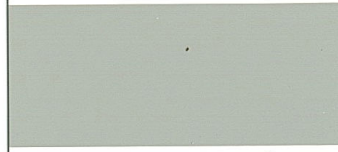
Gris clair (RAL 7035)



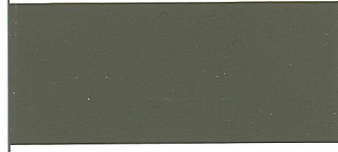
Gris platine (RAL 7036)



Gris poussière (RAL 7037)



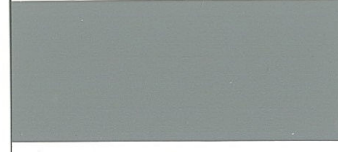
Gris agate (RAL 7038)



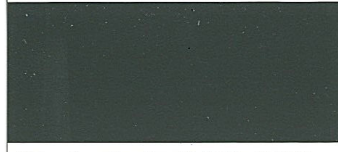
Gris quartz (RAL 7039)



Gris fenêtre (RAL 7040)



Gris signalisation A (RAL 7042)



Gris signalisation B (RAL 7043)



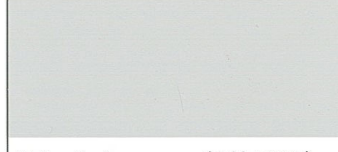
Gris soie (RAL 7044)



Telegris 1 (RAL 7045)



Telegris 2 (RAL 7046)



Telegris 4 (RAL 7047)

LES MARRONS



Brun vert (RAL 8000)



Brun terre de sienne (RAL 8001)



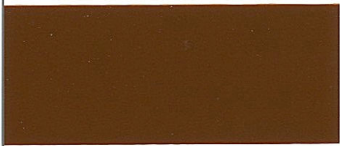
Brun de sécurité (RAL 8002)



Brun argile (RAL 8003)



Brun cuivré (RAL 8004)



Brun fauve (RAL 8007)



Brun olive (RAL 8008)



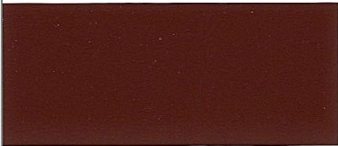
Brun noisette (RAL 8011)



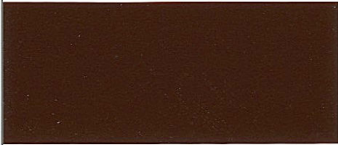
Brun rouge (RAL 8012)



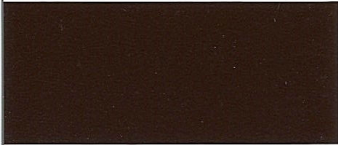
Brun sépia (RAL 8014)



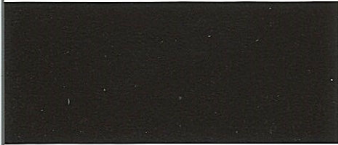
Marron (RAL 8015)



Brun acajou (RAL 8016)



Brun chocolat (RAL 8017)



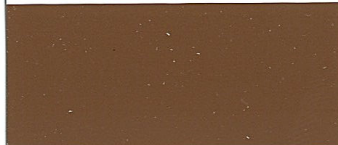
Brun gris (RAL 8019)



Brun noir (RAL 8022)



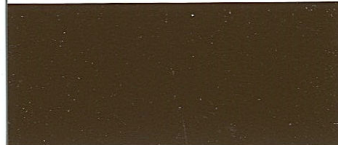
Brun orangé (RAL 8023)



Brun beige (RAL 8024)

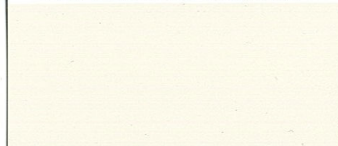


Brun pâle (RAL 8025)



Brun terre (RAL 8028)

LES NOIRS ET BLANCS



Blanc crème (RAL 9001)



Blanc gris (RAL 9002)



Blanc de sécurité (RAL 9003)



Noir de sécurité (RAL 9004)



Noir foncé (RAL 9005)



Blanc pur (RAL 9010)



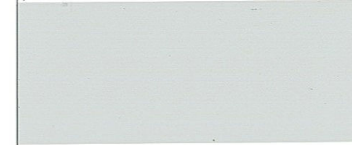
Noir graphite (RAL 9011)



Blanc signalisation (RAL 9016)



Noir signalisation (RAL 9017)



Blanc papyrus (RAL 9018)

LES ALUMINIUMS



Aluminium blanc (RAL 9006)



Aluminium gris (RAL 9007)